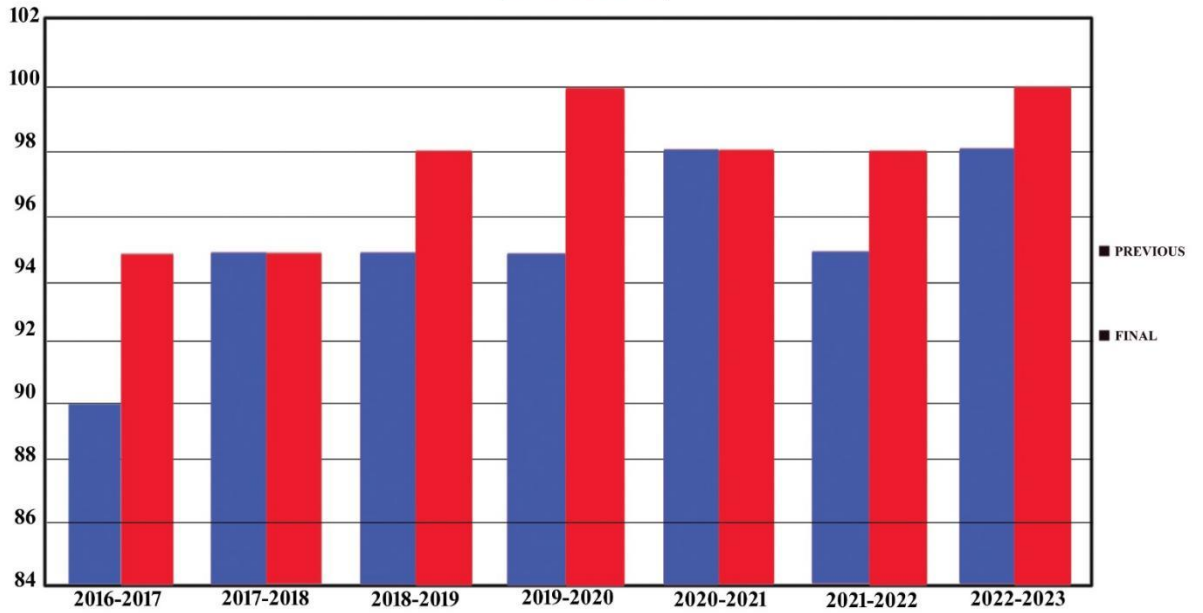
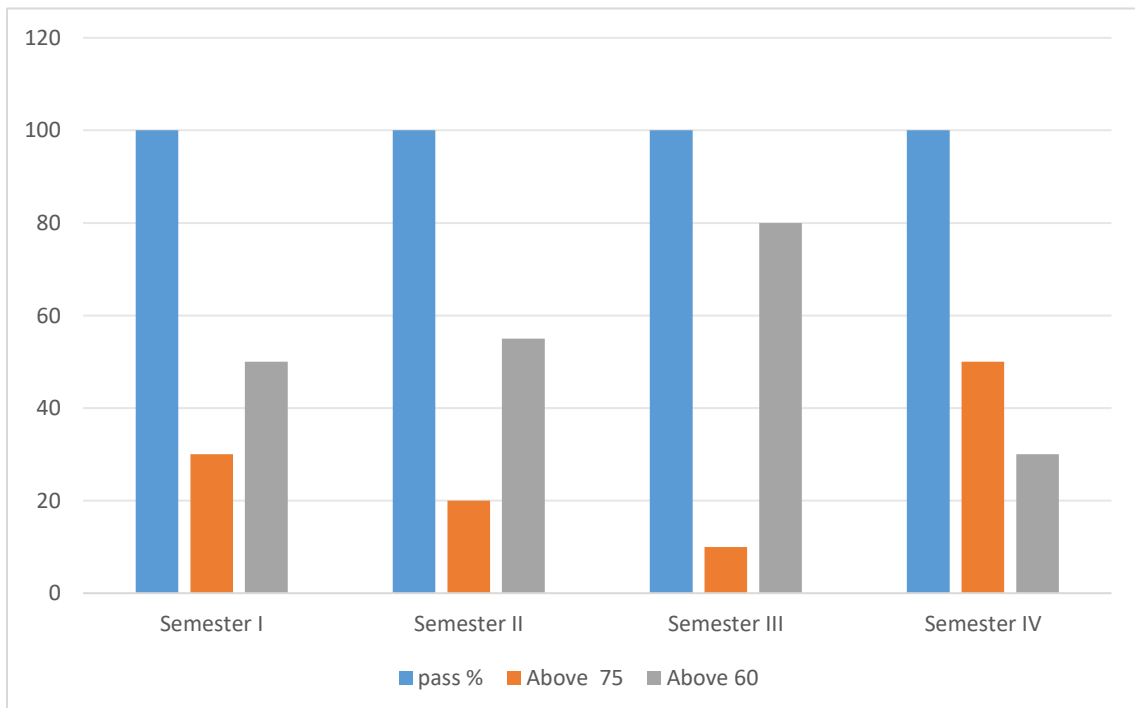


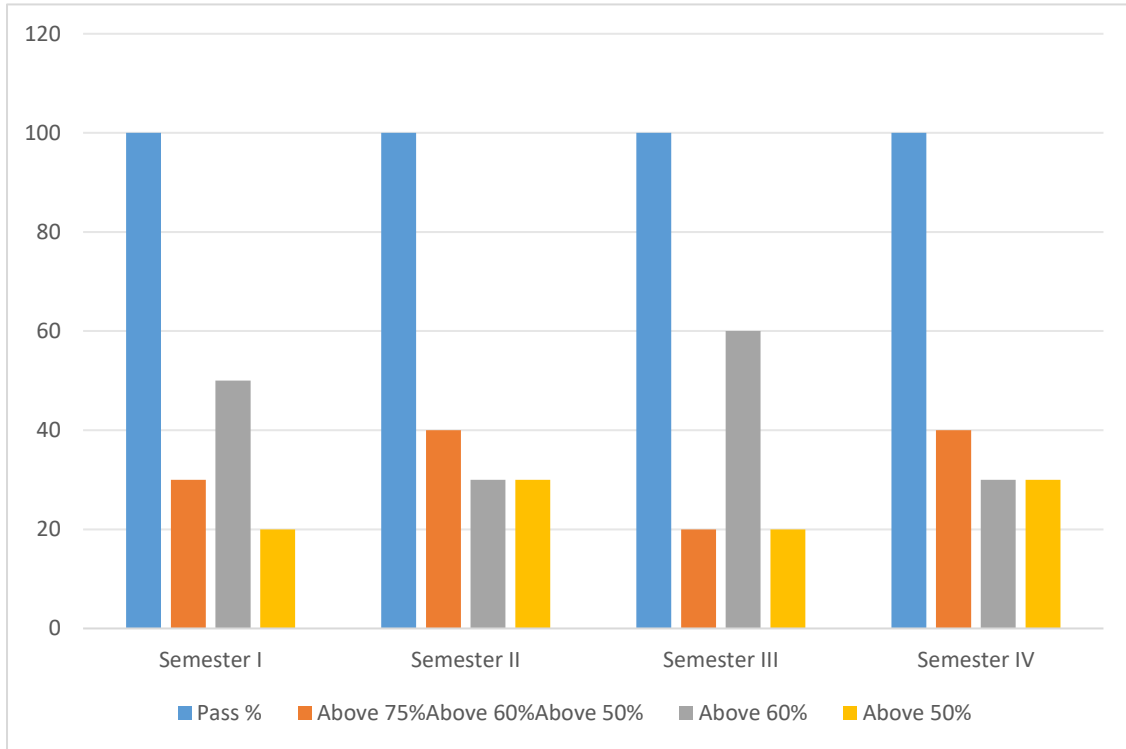
**ANDHRA CHRISTIAN COLLEGE  
P.G. DEPARTMENT OF ENGLISH  
CONSOLIDATED PERCENTAGE  
(2016-2023)**



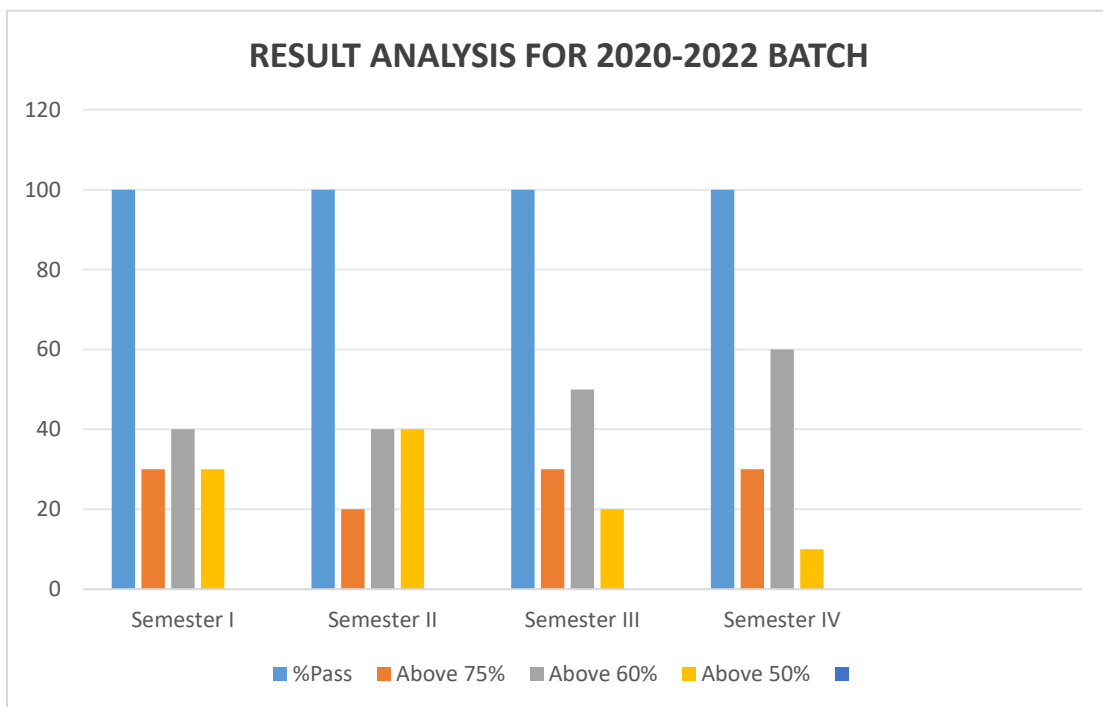
**RESULT ANALYSIS FOR 2018 -2020 BATCH**

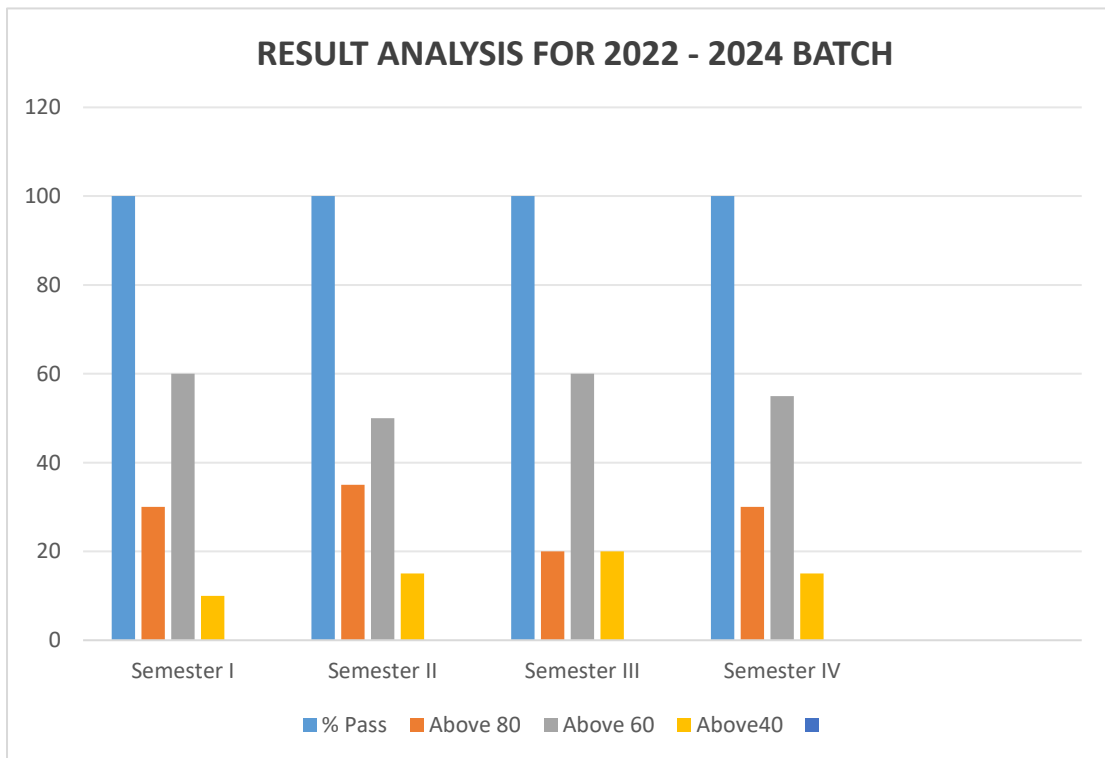
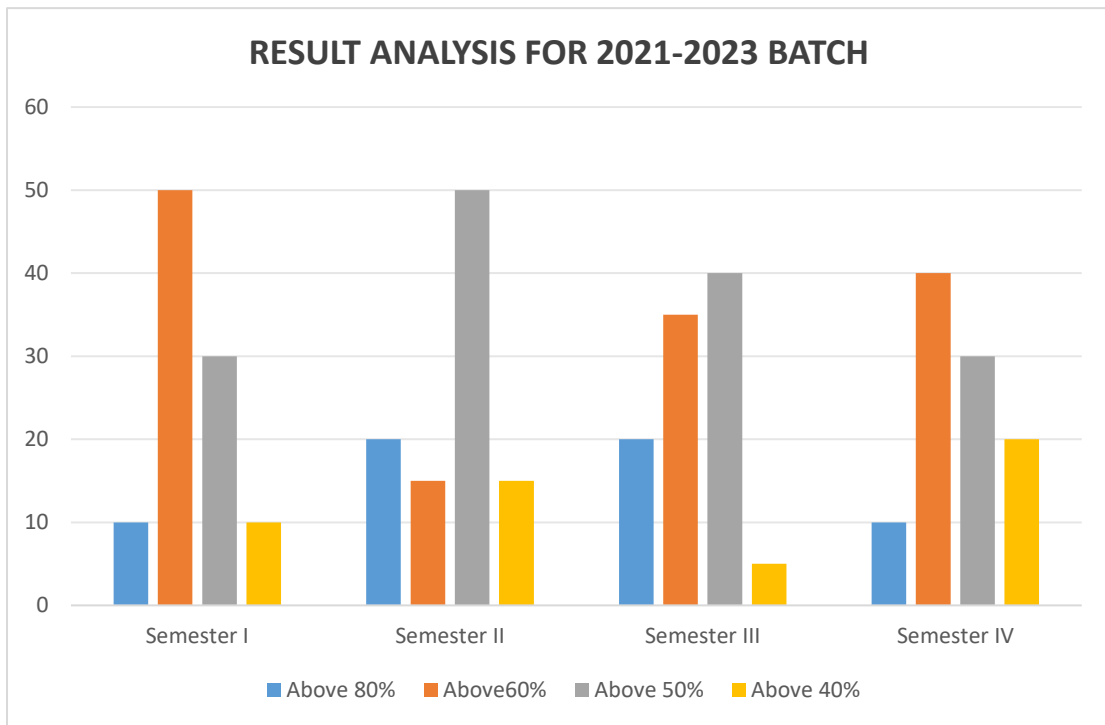


### RESULT ANALYSIS FOR 2019-2021 BATCH



### RESULT ANALYSIS FOR 2020-2022 BATCH





## POST GRADUATE DEPARTMENT OF ENGLISH

### 2018 -2023 YEAR WISE STUDENTS STRENGTH PARTICULARS

YEAR	SANTIONED STRENGTH	ACTUAL STRENGTH
2019- 2020	40	32
2018 - 2019	40	28
2020- 2021	40	20
2021 -2022	40	13
2022 -2023	40	07

### ENGLISH P.G. RESULTS FOR ACADEMIC YEARS : 2018-2023

#### UNIVERSITY EXAMINATION RESULTS

YEAR	ACTUAL STRENGTH	APPEARED	I CLASS	II CLASS	PASS %
2018-2019	32	32	28	04	100
2019-2020	28	28	26	02	100
2020-2021	20	20	20	NIL	100
2021-2022	13	13	13	NIL	100
2022-2023	07	07	07	NIL	100